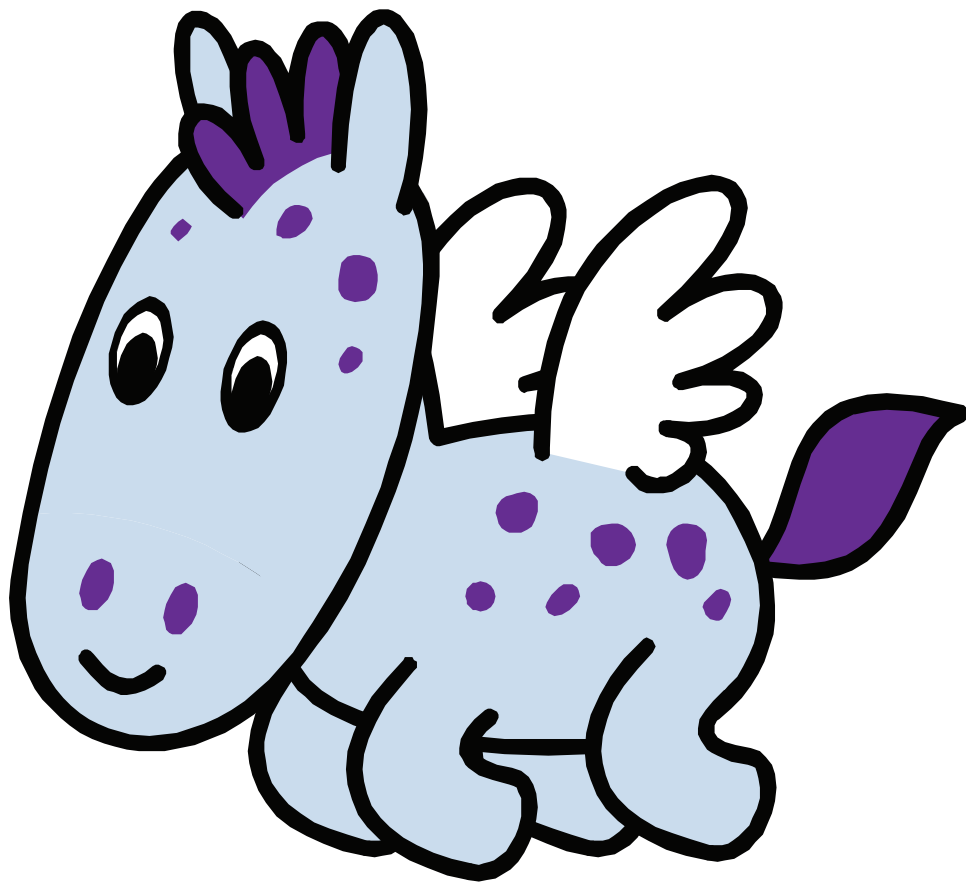


# DRAWING ASSIGNMENT

## WEEK NINE

DUE WEEK OF FEBRUARY 6TH

**Draw BIG and in black crayon.** With an animal, always start with the eyes or the nose. Find the middle of the page. Jump over to the left a little and draw the eyes. Jump down and draw the mouth. Draw the head, adding in the two ears and hair on top of the head. Starting on the side of the head by the eyes, start the top of the body, adding in the wings. Continue the body on around, drawing the two legs closest to you. Add the two legs behind those legs. Draw the tail. Color in the nostrils, spots, hair on top of the head, and the tail purple. Color the body light blue. Remember, NO TRACING!



FOR ST. THERESA SCHOOL ART CLASSES 2011-2012

